



# Touch Down



**Fantastic  
Regional Fares**

**Manchester's  
Super Jumbo**

**Airlines Agree  
Emission Goals**

**CONVERGING FLIGHT PATHS:**  
Airline mergers explored



## WELCOME ON-BOARD

The TD Travel Group would like to welcome the many companies who have joined us in the last few months.

Large or small, we are sure you will notice a positive difference from your previous business travel supplier.

We look forward to providing you with unbeatable service and great fares for many years to come.

Welcome to TD.

## AIR FRANCE TERMINAL MOVES AT MANCHESTER AND BIRMINGHAM

Following their recent tie up with FlyBE, Air France have moved terminals in Manchester and Birmingham.

Since 31 October 2010, all Air France flights at Manchester now operate from Terminal 3. Flights operated by KLM and Delta will continue to operate from Manchester Terminal 2.

Birmingham International flights have moved to Terminal 2. Flights operated by AF partners KLM and Delta will continue to operate from Birmingham International Terminal 1.

## STAY WITH ROTANA AND PAY TRIBUTE TO AN ITALIAN ICON

Book your stay in Abu Dhabi at any of Rotana's participating hotels and receive a Complimentary Premium Ticket to Ferrari World Abu Dhabi at Yas Island. Conditions apply.



## QATAR AIRWAYS GOES MOBILE

Qatar Airways have launched a mobile version of their site. Passengers can now check-in, get flight status information and choose seats from their mobile phone.

Qatar have also launched mobile check-in from Gatwick Airport meaning they now offer mobile check-in from all their UK departure points.



## THE SAVOY REOPENS

The Savoy, a Fairmont managed hotel, has reopened its doors following £200million refurbishment.

One of this year's most eagerly anticipated openings, The Savoy has been undergoing the most ambitious restoration in British history. The hotel closed in December 2007 for a restoration that encompasses the entire building from the iconic entrance and the American Bar to Savoy Grill and the 268 guestrooms and suites.



## KLM EXTEND FREE CHAUFFEUR SERVICE TO LIVERPOOL AIRPORT

Passengers travelling Business Class from Liverpool John Lennon Airport on KLM can now take advantage of KLM's complimentary chauffeur service.

Simply travel on any KLM long haul intercontinental flight by 30 November 2010 to qualify. It is hoped that the service will continue after the trial ends.



## QUICK NEWS



Qatar Airways are moving to Heathrow Terminal 4 on the 24th November.

Air France are increasing their weekday flights from Manchester - Paris to 7 flights and Birmingham - Paris to 6 flights a day.



Flybe will operate 3 flights a day on their new Manchester - Aberdeen route from 6th December.

Delta increase Heathrow to New York JFK to 3 daily flights.



KLM's 64th intercontinental destination has begun to Rwanda capital Kigali.

BA CityFlyer from is launching a twice daily service on London City - Stockholm from JAN 2011.

# Fantastic Fares from the North of England

The unrivalled growth of the TD Travel Group means we have become one of the most important suppliers to the airlines flying from the North Of England Airports.

Our locations of Liverpool, Manchester, Leeds and Hull means we help drive customers to the North's regional airports. When the airlines flying from these airports put special fares into the market they come to the TD Travel Group first.

Recent new fares from EMIRATES, ETIHAD and QATAR give FANTASTIC FARES with unrivalled levels of service.

In addition we hold the Worldwide contracts for KLM, AIR FRANCE and DELTA which gives you the opportunity to fly from LIVERPOOL, MANCHESTER, LEEDS/BRADFORD and HUMBERSIDE at the most competitive fares available anywhere.

**Existing TD TRAVEL GROUP clients already benefit from these SPECIAL FARES - you can join them today.**

Simply contact any TD location or email [fares@tdtravelgroup.com](mailto:fares@tdtravelgroup.com)

**Unbeatable fares on the World's Best Airlines**



## HELP US SUPPORT OUR REGIONAL AIRPORTS and AIRLINES.



One of the UK's longest established operational Airports having officially opened in July 1933, the airport now handles over 100,000 passengers a week.

KLM fly 4 times a day to Amsterdam and connects to over 650 destinations via their Sky Team partners.

The airport is currently undergoing a £12 million re-development programme to provide an expanded departure lounge and a new larger security screening area.



The UK's largest regional airport handling 22 million passengers a year.

Over 100 airlines offer direct flights from Manchester to 225 destinations worldwide, more than any other UK airport.

Manchester Airport has become the first regional airport in the world to service the A380 "Super Jumbo".

Manchester was voted the Best UK airport in the Business Travel Awards 2010.



Leeds Bradford is the highest airport in England at an elevation at 681 ft.

Easyjet have announced their first route from the airport to Geneva starting 17th December.

A 5 year £28 million redevelopment plan is currently underway which will see a new two storey building extension and internal improvements to the existing terminal.

These improvements will provide a new departure lounge and a larger security screening zone.



Humberside airport now handles over 320,000 passengers a year to over 20 destinations.

KLM offer a four times daily shuttle services to Amsterdam Schiphol to connect with their global network.

The airport is also home to the UK's second largest heliport, serving the offshore industry in the North Sea.

Humberside Airport not only serves scheduled and charter air passengers, but has a thriving freight operation.

## Airport Departure Tax Rises Again

From 01st November 2010, Airport Departure Tax (APD) will increase.

Airlines have reacted strongly to the increase, with British Airways, Virgin, Ryanair and Easyjet all warning that an increase of upto 55% is too great.

Due to the way the tax bands are decided (the distance from Britain to a country's capital), passengers travelling to the Caribbean pay more in tax than those flying to Hawaii, some 3,000 miles further away.

The new system is expected to raise £3.5 billion next year.

	Economy	Premium
BAND A (Europe, North Africa)	£12	£24
BAND B (North America, Middle-East, Russia)	£60	£120
BAND C (Caribbean, southern Africa, Far East)	£75	£150
BAND D (Australasia, Indonesia, Malaysia, Argentina)	£85	£170

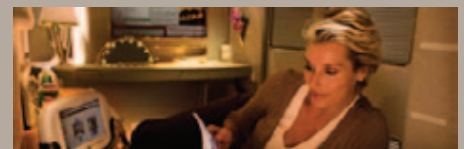
## Emirates Super Jumbo Lands At Manchester

Manchester Airport has become the first regional base in the world to service the A380 "Super Jumbo".

The Emirates A380 promises customers in all classes a whole new travel experience. Designed to transport passengers on long-haul journeys in unmatched comfort, the Emirates A380 boasts First Class Shower Spas, a spacious onboard Lounge, and our award-winning ice inflight entertainment system offering over 1,200 channels of movies, music and games on-demand in all classes.

The daily flight operates as EK0018, departing Manchester at 14:10hrs, and returns as the EK0017, departing Dubai at 07:55 (local time).

Contact TD to check availability and prices.



## "Thank You, TD", From Freetown.

As part of the British Council Connecting Classrooms Project, Stretford High School have formed a link with Benguema Secondary School in Freetown, Sierra Leone. Connecting Classrooms is a global programme that creates partnerships between clusters of schools in the UK and others around the world. These partnerships bring an international dimension to young people's learning, to improve their knowledge and understanding of other cultures and prepare them for life and work as global citizens.



Tony Fretwell, Jessica Genovese, Griff King and Joel Keating, with the staff from Benguema Army Rec School, Freetown.

Tony Fretwell from Stretford High School said, "We would like to thank Jo and the team at TD Travel Group Leeds for all their assistance in helping us make this project such a success. We have created a 12 minute film about our visit and the credits feature a thank you to all at TD to show how much we appreciated your help".

So far the project has seen;

- ~ CPD Training - all our CPD training resources are being used for teachers in Freetown
- ~ Planning - helping the Benguema family of schools to create school development plans
- ~ Church link
- ~ Video - the video is being used to help create awareness
- ~ Recycle for Sierra Leone - unused resources from the School are transported to schools in Benguema by the British Army for free.

# Converging Flight Paths

As airlines struggle to stay airborne in the wake of the global financial crisis, a growing number have begun to cut costs and spread their cost base by consolidating operations with their former competitors. We take a look at two of the latest mergers and ask what difference it will make to passengers.

**UNITED**

**Continental Airlines**

**BRITISH AIRWAYS**



**IBERIA**

**American Airlines**

## United Continental

**United Airlines** and **Continental Airlines** have merged to create the world's biggest airline with over 5,800 flights a day to 371 destinations worldwide.

Continental and United, operating under United Continental Holdings, Inc., have begun the work of integrating the two companies. In the near term, customers can expect to interact with each carrier as they always have.

Customers flying on Continental will continue to check in at [continental.com](http://continental.com), or at Continental kiosks and ticket counters, and to be assisted by Continental employees, and customers flying on United will continue to check in at [united.com](http://united.com) or at United kiosks or ticket counters, and to be assisted by United employees.

Customers will continue to earn and redeem frequent-flier miles through the respective loyalty programs of Continental and United until those programs are combined.

The company expects that travellers will begin to experience a more unified product in the spring of 2011, as the carriers integrate key customer service and marketing activities to deliver a more seamless product. By early 2012, travellers will see a combined airline called **United Airlines**, with Continental's blue and gold colours and globe logo on the tail.

It is difficult to say where these mergers leave the business traveller.

Airlines say that consumers will benefit from passed-on cost savings, new system wide destinations and routes, increased capacity and a better overall product. So in theory, the reduction in overheads should result in lower fares but some industry insiders disagree.

"Mergers tend to be a net negative for consumers," said Tim Winship, the editor of [FrequentFlier.com](http://FrequentFlier.com). "Combining airlines could inevitably result in a

## International Airlines Group

**British Airways** and **Iberia** have recently merged to form **International Airlines Group (IAG)**, a combined company with 419 aircraft, flying to more than 200 destinations and carrying over 62 million passengers a year. Each airline will continue to operate under its own brand for the foreseeable future.

Willie Walsh, chief executive of the new airline, said: "The merged company will provide customers with a larger combined network. It will also have greater potential for further growth by optimising the dual hubs of London and Madrid and providing continued investment in new products and services."

IAG have also agreed an \$8 billion transatlantic joint business route merger deal with **American Airlines**. The three airlines are strengthening their existing oneworld alliance ties but have had to stop short of a full financial merger because of strict U.S. laws that bar foreign ownership in the airline industry.



The new look United Airlines

significant loss of competition, the predictable result of which would be an increase in airfares in certain markets".

The last big airline merger between Delta and Northwest in 2008 has actually resulted in lower fares but this could be down to the affect of the global economic recession say industry experts.

One thing seems certain, if economic pressures continue to build on the airlines, more mergers and consolidations will be on the way.

## TD Merseyside Doubles in Size

Following on from a number of new account wins, TD's Merseyside location has expanded by taking over and knocking through to the office next door!

The expansion effectively doubles the available space and provides an ideal base for the continued development of this TD Travel Management centre.

Based on the Woodside Business Park, the office currently employs 14 staff.

**TD TRAVEL**  
Management

## Etihad to Open State of the Art Business Lounge at Manchester:



Etihad Airways has announced it will open its third international premium lounge in Manchester.

The new lounge, which will open in December in Manchester Airport's Terminal 1 will reflect Etihad's award winning style, service concept and high quality look and feel.

Peter Baumgartner, Etihad Airways CCO, said, "The choice of Manchester as the next venue for a dedicated Etihad lounge is yet another example of our long-term commitment to this important route."

The lounge will offer premium customers a range of features, including five-star dining, business centre, luxurious bathrooms / shower facilities, prayer room, family room and a relaxation area.

**TD HOLIDAY**  
Options

## Leisure Travel from TD

At TD Holiday Options we know just what is required to turn a good holiday into a great one! We offer a superior service, expert advice and great value that will be remembered long after your return.

Looking for something different? From Galapagos cruises to grizzly bear watching, hitting the open road on the famous Route 66 self drive or saddling up, donning your Stetson and becoming a Cowboy, our specialists can guide you through every step of your booking.

Speak to **Eva** in our Manchester office on:  
**0161 488 3504**

or **Martyn & Libby** in Hull on:  
**01430 471 860.**

[www.tdholidayoptions.com](http://www.tdholidayoptions.com)

## Latest Offers

### Kids Fly Free to Lapland.

From action packed, all inclusive day breaks to magical 4 night stays, you can treat the kids to a Christmas they will never forget!

With departures from Birmingham | Bristol | Cardiff | Doncaster | East Midlands | Gatwick | Glasgow | Leeds Bradford | Manchester | Newcastle | Stansted.

### Fly Away to The Sun

Looking to get away from the winter blues? Check out the latest Sandals deals to the Caribbean.

Save up to up to 40% on 2010 and 2011 Sandals holidays and the second passenger flies FREE!

Offers applies to Sandals Grande Antigua Resort & Spa, Sandals Halcyon Beach St Lucia, Sandals Royal Bahamian Spa Resort, Beaches Turks & Caicos Resort Villages & Spa

Conditions apply to all offers. Any prices are subject to availability and are valid for new bookings only. Black out dates and minimum night stays apply.

### Philadelphia City Breaks

from £649.00 per person

Visit America's friendliest city, Philadelphia is rich in history and culture.

Valid for departures until 31 Mar 2011.

### Bangkok and Hua Hin Twin Centre

11 nights from £1059pp

3 nights 5\* Dusit Thani Bangkok  
8 nights 5\* Dusit Thani Hua Hin  
(Includes 5 Nights FREE, FREE room upgrade)

Based on travel 24th February 2011. Other dates, hotels, departures and durations also available.

## Airlines Agree Historic Carbon Emissions Goals

The International Civil Aviation Organization (ICAO) has secured agreement from all 190 member states to create a global agreement to reduce carbon dioxide emissions from the aviation industry.

Total CO<sub>2</sub> emissions from the aviation sector (domestic and international operations) currently accounts for 2% of Global CO<sub>2</sub> emissions.

To meet these targets, the industry will need to include new cleaner technologies, operational measures (inc. shorter flight times) and market based measures (inc. emissions trading) as well as other solutions such as alternative fuels.

IATA director general Giovanni Bisignani commented, "No other industry sector has a similar, globally-agreed framework for managing its response to climate change."



The ICAO resolution calls for:

*Improving fuel efficiency by 2% annually to 2050.*

*Striving to achieve a collective medium-term aspirational goal of capping aviation's carbon emissions from 2020.*

*A global CO<sub>2</sub> standard for aircraft engines with a target date of 2013.*



Want to calculate the carbon footprint for your business travel?

We will do it for you automatically!

At TD, we take environmental concerns seriously. We were one of the first business travel management companies to create a system to provide carbon data.

Our carbon reporting suite is now integrated into our online business travel management information system (TDMI). This allows companies to quickly identify their carbon footprint figure for offsetting purposes.

Using this data, clients can build an effective strategy to manage and reduce their emissions.

Please contact us if you would like to discuss your carbon emission reports.

## Important Information for Travellers to the United States.



The United States Department of Homeland Security and the Transportation Security Administration (TSA) have implemented "Secure Flight", a behind the scenes program that enhances the security of air travel through the use of improved watch list matching.

### How will Secure Flight affect passengers?

Under the Secure Flight program, passengers to the U.S. will be required to provide the following details at least 72 hours prior to departure:

**Full name** (as it appears on passenger's passport)  
**Date of birth**  
**Gender**  
**Redress Number** (if applicable)

This mandatory information is in addition to the existing Advanced Passenger Information (API) that is already required by most countries.

The mandatory API is:

**Passport Number**  
**Country of issue**  
**Date of expiry**  
**Nationality**

Please provide this information at the time of booking your next flight and TD will store them for your future travel.

Once stored, TD will include this information in any relevant booking and the information will be sent to the TSA who will check it against terrorist watch lists.

**UK passport holders visiting the United States will still be required to complete an ESTA online visa waiver.**

**The ESTA can only be completed online at: <https://esta.cbp.dhs.gov/>**

**Please note, since September 2010, a \$14 processing fee now applies for ESTA applications.**

## Air France: New Business Class Seat

Featuring a 2 metre long spacious lie-flat bed - one of the longest on the market - the new Business Class seat is designed to provide passengers with improved comfort at every stage of the trip.

- \* Up to 61" seat pitch
- \* Simplified seat controls
- \* Retractable armrest for added space
- \* Tray wide enough for laptop
- \* Extra storage



## Automated Passport Control System Launches in Paris.

Authorities in France have begun rolling out an automated passport control system at Paris Charles de Gaulle and Paris Orly. The PARAFES system is expected to simplify and speed up border controls in the Schengen area.

Travellers must register their details prior to using the system at one of the dedicated PARAFES Lounges at Charles de Gaulle or Orly airports. Registration is free and lasts for 5 years.

Once registered, travellers are able to use the dedicated "automated airlocks" to enter or depart the country.



### Registration Offices:

#### Paris-Charles de Gaulle:

Terminal 2E:  
Close to exit 10, departure level

Terminal 1: close to exit 24

#### Paris-Orly :

Terminal Sud:  
Departure Level, Boarding gate A.

### Airlock Locations:

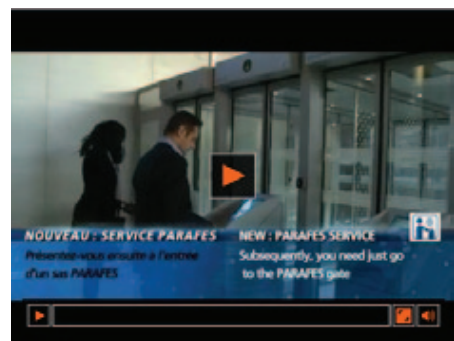
#### Paris-Charles de Gaulle:

Terminal 2E  
Terminal 2F

Terminal 1

#### Paris-Orly :

Terminal Sud:



## TD ROOM Finder

TD RoomFinder is the specialist hotel reservation division of the TD Travel Group.

Providing the same level of service you would expect from us, TD RoomFinder have the expertise you need when booking hotels, meetings and conferences.

TD RoomFinder has access to the best rates for thousands of hotels in the UK and around the World.

Our specialists can advise on the most suitable hotel to meet your budget and location requirements.

Contact TD RoomFinder

0161 488 3501

hotels@tdtravelgroup.com

### business travel centres:

Manchester: Brooke Court, Handforth Dean, Wilmslow, Cheshire, SK9 3ND  
 Merseyside: Woodside Business Park, Shore Road, Merseyside CH41 1EL  
 Leeds: West One, Wellington Street, Leeds, LS1 1BA  
 Hull: Westbridge Court, South Cave, East Yorkshire, HU15 2HG

0161 488 3500  
 0151 650 8590  
 0113 234 1010  
 01430 471 472

### websites

www.tdtravelgroup.com  
 www.tdsport.co.uk  
 www.tdholidayoptions.com

